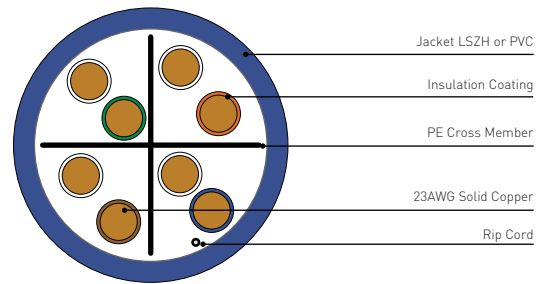
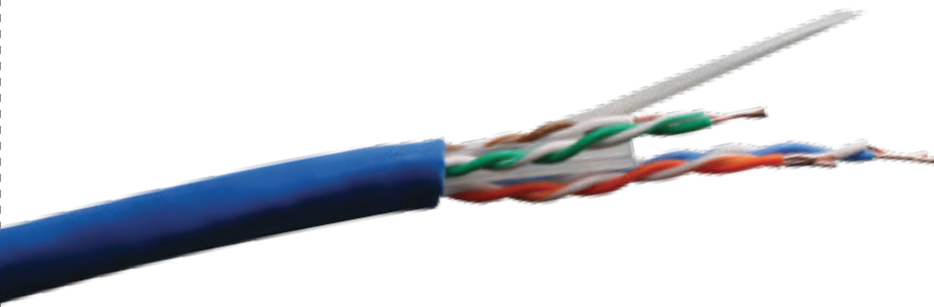


CATEGORY 6_A U/UTP CABLE



Category 6_A Unshielded Twisted Pair (U/UTP) cable is produced using a 4 x 2 x 23 AWG copper wire structure to a class EA standard, and supports protocols up to 500 MHz. It is ideal for horizontal and backbone installations

★ Features

- 23 AWG conductor (0.57mm) – solid bare copper cable
- PVC or LSZH external jacket options
- Supplied in 305m boxes or 500m reels
- Printed metre marks

✓ Applications

- Supports category 6_A networks running up to 500 MHz applications
- Horizontal and backbone installations
- 10 Base T (IEEE 802.3)
- 100 Base T (IEEE 802.3U)
- 1000 Base T (IEEE 802.3ab)
- 100 VG any LAN (IEEE 802.12)
- Token ring (IEEE 805.5)
- ATM 155
- 10G Base T (IEEE 802.3an)

🎯 Conformance

- Category 6_A
- EIA/TIA 568B.2 : 2002
- ISO/IEC 11801 : 2002
- This product conforms to the materials requirements of RoHS2 / REACH

🎯 Applicable Standards

The Category 6_A U/UTP LSZH cable is manufactured and tested directly in accordance with the major industry standards:

- ISO/IEC 11801:2011
- ANSI/TIA/EIA 568-C.2
- CENELEC EN 50173-1:2011
- IEC 61156-5
- EN 50288-2-1

🔥 Fire Performance

Category 6_A U/UTP LSZH cables exceed the requirements of:

- IEC 60332-1-2
- IEC 60754-2
- IEC 61034